

## Certificate of Conformity

- (1)
- (2) Equipment and Protective Systems Intended for Use in Potentially Explosive Atmospheres – **Directive 2014/34/EU**

(3) Certificate Number:

**EPS 13 ATEX 1 575 X**

**Revision 3**

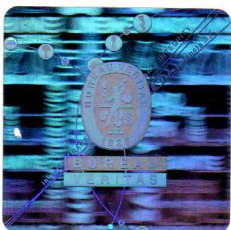
- (4) Equipment: Power supply (built-in):  
DRP024V060W3BX, DRP024V120W3BX, DRP024V240W3BX,  
DRP024V480W3BX
- (5) Manufacturer: Delta Electronics (Thailand) Public Co., Ltd.
- (6) Address: 909 Soi 9, Moo 4, Bangpoo Industrial Estate (E.P.Z.), Pattana 1 Road,  
Tambol Phrasksa, Amphur Muang, Samutprakarn 10280, THAILAND
- (7) This equipment and any acceptable variation thereto are specified in the schedule to this Certificate of Conformity and the documents therein referred to.
- (8) Bureau Veritas Consumer Products Services Germany GmbH certifies based on a voluntary assessment that this equipment has been found to comply with the Essential Health and Safety Requirements relating to the design and construction of equipment and protective systems intended for use in potentially explosive atmospheres, given in Annex II of the Directive 2014/34/EU. The examination and test results are recorded in the confidential documentation under the reference number 13TH0310.
- (9) Compliance with the Essential Health and Safety Requirements has been assured by compliance with:

**EN IEC 60079-0:2018**

**EN IEC 60079-7:2015+A1:2018**

- (10) If the sign "X" is placed after the certificate number, it indicates that the equipment is subject to special conditions for safe use specified in the schedule to this certificate.
- (11) This Certificate of Conformity relates only to the design and the construction of the specified equipment in accordance with Directive 2014/34/EU. Further requirements of this Directive apply to the manufacture and supply of this equipment. Those requirements are not covered by this certificate.
- (12) The marking of the equipment shall include the following:

 II 3G Ex ec IIC T4 Gc



Hamburg, 2021-04-29

(13) **Annexe**

(14) **Certificate of Conformity EPS 13 ATEX 1 575 X**

**Revision 3**

(15) Description of equipment:

Power supply series for built-in use (DIN-rail). The power supplies are supplied by mains voltage and provide isolated d.c. output voltage.

Ambient temperature is from -25 °C to +80 °C with de-rating of the output power as shown below: All devices are designed for installation in an enclosure providing protection against electrical, mechanical and fire hazards and are intended for general use such as in industrial control, power distribution and instrumentation equipment.

Revision 1: Additional investigation according to EN 60079-0/A11:2013.

Revision 2: Testing of alternate construction.

Revision 3: Update to current edition of standards (change of type of protection "nA" to "ec")

Update of ATEX standards to current version. Minor editorial changes, not safety relevant.

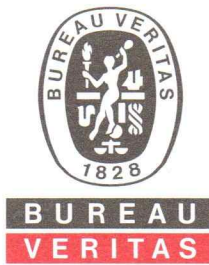
Electrical data:

<p><u>DRP024V060W3BX</u>            Input:            3 x 400-500 Vac   0,3 A   50-60 Hz            Output:            24 Vdc   2,5 A            Ambient:            -25 °C ≤ Ta ≤ +80 °C</p>	<p><u>DRP024V120W3BX</u>            Input:            3 x 400-500 Vac   0,5 A   50-60 Hz            Output:            24 Vdc   5 A            Ambient:            -25 °C ≤ Ta ≤ +80 °C</p>
<p><u>DRP024V240W3BX</u>            Input:            3 x 400-500 Vac   0,75 A   50-60 Hz            Output:            24 Vdc   10 A            Ambient:            -25 °C ≤ Ta ≤ +80 °C</p>	<p><u>DRP024V480W3BX</u>            Input:            3 x 400-500 Vac   1,0 A   50-60 Hz            Output:            24 Vdc   20 A            Ambient:            -25 °C ≤ Ta ≤ +80 °C</p>

(16) Reference number: 13TH0310

(17) Schedule of Limitations:

- The equipment shall be installed in an enclosure that provides a degree of protection not less than IP 54 in accordance with EN 60079-0.
- The equipment shall only be used in an area of not more than pollution degree 2, as defined in EN 60664-1.
- Special ambient temperature range. De-rating conditions at high ambient temperatures must be considered.



**Certificate of Conformity EPS 13 ATEX 1 575 X**

**Revision 3**

(18) Essential health and safety requirements:

Met by standards.

Certification department of explosion protection

Hamburg, 2021-04-29



H. Schaffer