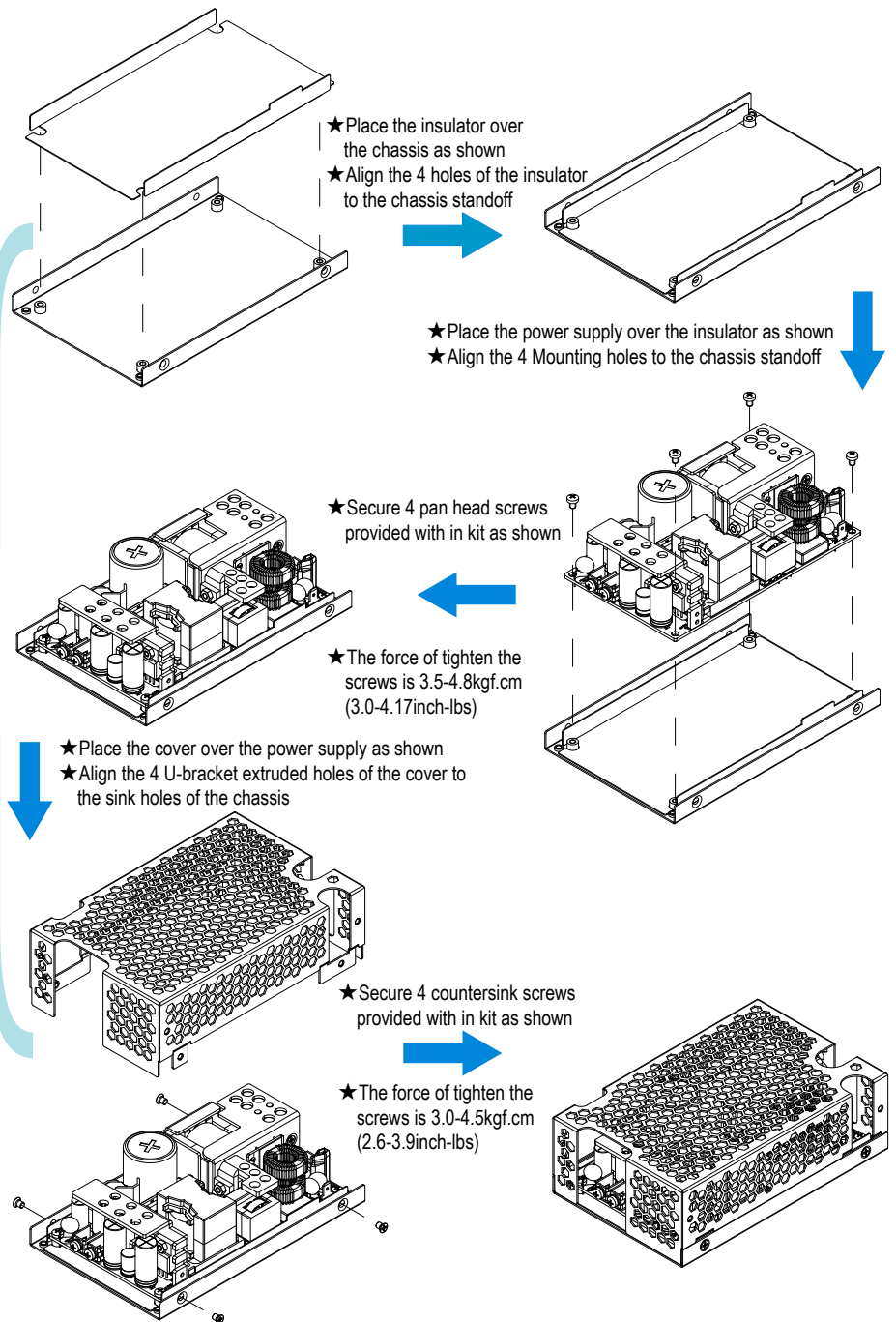
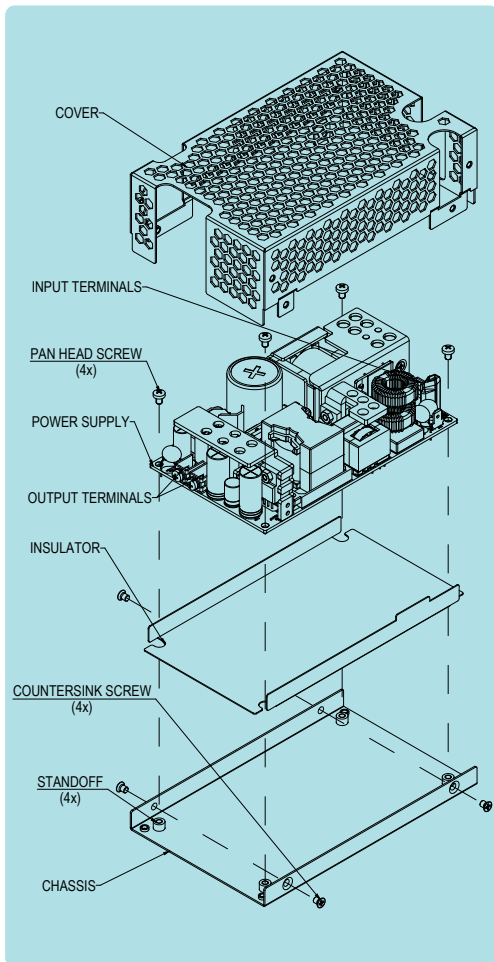


Medical AC-DC Open Frame Power Supply

Enclosed Cover Kit for MDS-250A and MDS-300A series

Assembly Notes



Materials:

- ▲ 1 Chassis
- ▲ 1 Cover
- ▲ 4 M3 x 0.5 x 5mm Pan head screws
- ▲ 4 M3 x 0.5 x 4mm countersunk screws
- ▲ 1 Plastic insulator sheet

Assembly Instructions and Notes:

1. Overall dimensions: 140.0mm (5.512 inch) x 88.9mm (3.5 inch) x 44.4mm (1.748 inch).
2. Ensure insulator is correctly fitted on base under PCB to maintain safety creepage and clearances.
3. When using this enclosure, ensure that relevant safety standards are complied with, in respect to creepage and clearance distances, and distances through insulation.
4. All dimensions are in mm (inches).
5. There are two locations where assembled power supply is connected to the customer's product(see page 2 for details):
 - a. Bottom mounting, use (4X) M3 screws to affix assembled power supply to product's enclosure. Maximum allowed screw penetration is 3.5mm (0.138 inch).
 - b. Side mounting, use (2X) M3 screws to affix one side of assembled power supply to the product's enclosure. Maximum allowed screw penetration is 3.5mm (0.138 inch).

Medical AC-DC Open Frame Power Supply

Enclosed Cover Kit for MDS-250A and MDS-300A series

■ Mechanical drawing

