



LED Driver

Programing Tool

www.DeltaPSU.com



Product Overview

Outdoor LED Drivers

Series	Models	Iout (mA)	Pout (W)	Vin (VAC)	Dimming Type	Ingress Protection/ Environmental Locations	Programming Tool	Safety
USC4 LITE	USC4-100140GB	600-1400	100	277-480	0-10V	Dry and Damp	PTDV05UB	UL
	USC4-200140GB	600-1400	200	277-480	0-10V	Dry and Damp	PTDV05UB	UL
USCI LITE	USCI-100140GB	600-1400	100	120-277	0-10V	Dry and Damp	PTDV05UB	UL
	USCI-200140GB	600-1400	200	120-277	0-10V	Dry and Damp	PTDV05UB	UL
USC4 PRO	USC4-320280GA	1400 – 2800	320	277-480	0-10V	Wet	PTDV05UB	UL
	USC4-600400GA	1000 – 3000	600	277-480	0-10V	Wet	PTDV05UB	UL
USCO PRO	USCO-075140GA	500 – 1400	75	110-277	0-10V	IP66/IP67/ Wet	PTDV05UB	UL,CE,ENEC
	USCO-100140GA	600 – 1400	100	110-277	0-10V	IP66/IP67/ Wet	PTDV05UB	UL,CE,ENEC
	USCO-150140GC	600 – 1400	150	110-277	0-10V	IP66/IP67/ Wet	PTDV05UB	UL,CE,ENEC
	USCO-200140GA	600 – 1400	200	110-277	0-10V	IP66/IP67/ Wet	PTDV05UB	UL,CE,ENEC
	USCO-250140GA	600 – 1400	250	110-277	0-10V	IP66/IP67/ Wet	PTDV05UB	UL,CE,ENEC
	USCO-320210GA	700 – 2100	320	110-277	0-10V	IP66/IP67/ Wet	PTDV05UB	UL,CE,ENEC
	USCO-320280GA	700~ 2800	320	110-277	0-10V	IP67/ Wet	PTDV05UB	UL,CE,ENEC
	USCO-600400GA	1000-3000	600	120-277	0-10V	IP66/IP67/ Wet	PTDV05UB	UL,CE,ENEC
USCI PRO	USCI-075140GA	500-1400	75	120-277	0-10V	Dry and Damp	PTDV05UB	UL,CE
	USCI-100140GA	600-1400	100	120-277	0-10V	Dry and Damp	PTDV05UB	UL,CE
	USCI-150140GC	600-1400	150	120-277	0-10V	Dry and Damp	PTDV05UB	UL,CE
	USCI-200140GA	600-1400	200	120-277	0-10V	Dry and Damp	PTDV05UB	UL,CE
	USCI-200175GA	700-1750	200	120-277	0-10V	Dry and Damp	PTDV05UB	UL,CE
	USCI-200175GLA	700-1750	200	120-277	DALI-2	Dry and Damp	SDPTDV05UAx	UL,CE

Outdoor LED Drivers

Series	Model	Iout (mA)	Pout (W)	Vin (VAC)	Dimming Type	Ingress Protection/ Environmental Locations	Programming Tool	Safety
EUCO ARENA SPORT	EUCO-1K5140GLA	490-1400	1500	220-400	DALI-2	IP66	SDPTDV05UAx	CE,ENEC
	EUCO-1K5140GDA	490-1400	1500	220-400	RDM/DMX	IP66	SDPTDV05UAx	CE,ENEC
	EUCO-1K0140GLA	490-1400	1000	220-400	DALI-2	IP66	SDPTDV05UAx	CE,ENEC
	EUCO-1K0140GDA	490-1400	1000	220-400	RDM/DMX	IP66	SDPTDV05UAx	CE,ENEC
EUCI LITE	EUCI-022105GLB	200-1050	22	220-240	DALI-2	IP20	CPR30-USB ISC.PRH101-USB SDPTDV05UAx	CE,ENEC
	EUCI-040105GLB	200-1050	40	220-240	DALI-2	IP20		CE,ENEC
EUCI PRE	EUCI-022105GIA	200-1050	22	220-240	D4i	IP20		CE,ENEC
	EUCI-040105GIA	200-1050	40	220-240	D4i	IP20		CE,ENEC
EUCI PRO	EUCI-040105GLA	200-1050	40	200-240	DALI-2	IP20		CE,ENEC
	EUCI-075105GLA	350-1050	75	220-240	DALI-2	IP20		CE,ENEC
	EUCI-130105GLA	350-1050	130	220-240	DALI-2	IP20		CE,ENEC
	EUCI-170105GLA	350-1050	170	220-240	DALI-2	IP20		CE,ENEC
EUCO PRO	EUCO-150140GA	600 – 1400	150	220-240	0-10V	IP66/IP67	PTDV05UB	CE,ENEC,CCC
	EUCO-200140GA	600 – 1400	200	220-240	0-10V	IP66/IP67	PTDV05UB	CE,ENEC,CCC
	EUCO-250140GA	600 – 1400	250	220-240	0-10V	IP66/IP67	PTDV05UB	CE,ENEC,CCC

Product Overview

| Indoor LED Drivers

Series	Model Name	Iout (mA)	Pout (W)	Vin (V _{ac})	Dimming Type	Ingress Protection/ Environmental Locations	Programming Tool	Safety
USCT LINEAR	USCT-030105GA	350-1050	30	120-277	0-10V	Dry and Damp	PTDV05UB	UL
	USCT-050140GA	350-1400	50	120-277	0-10V	Dry and Damp	PTDV05UB	UL
	USCT-080210GA	700-2100	80	120-277	0-10V	Dry and Damp	PTDV05UB	UL
USCI LINEAR	USCI-100410DA	4150	96	120-277	0-10V	Dry and Damp	X	CE, FCC, UL, Class 2
EUCI MINI	EUCI-020070GLA	250-700	20	220-240 176-280	DALI	IP20	PTDV15LA	CE, CB, ENEC, SELV
	EUCI-020070GLAB	250-700	20	220-240 176-280	DALI	IP20	PTDV15LA	CE, CB, ENEC, SELV
EUCI BA	EUCI-015035BA	200-350	Ch1+Ch2=15	220-240	BLE	IP20	iOS APP	CCC,CE,ENEC,SELV
	EUCI-035090BA	500-900	Ch1+Ch2=35	220-240	BLE	IP20	iOS APP	CCC,CE,ENEC,SELV
EUCI BL	EUCI-020070BLA	250-700	20	220-240	BLE / DALI	IP20	PTDV15LA	CCC,CE,ENEC,SELV
	EUCI-040140BLA	500-1400	40	220-240	BLE / DALI	IP20	PTDV15LA	CCC,CE,ENEC,SELV
USCT BL	USCT-040105HLA	350-1050	Ch1+Ch2=40	110-277	BLE Dongle / DALI-2	Dry and Damp	SDPTDV05UAx	UL,Class2
	USCT-040105ULA	350-1050	40	110-277	BLE Dongle / DALI-2	Dry and Damp	SDPTDV05UAx	UL,Class2
EUCI BLS	EUCI-040035UA	350 x 2ch	20 x 2ch	220-240	BLE Dongle / DALI	IP20	X	CE,ENEC

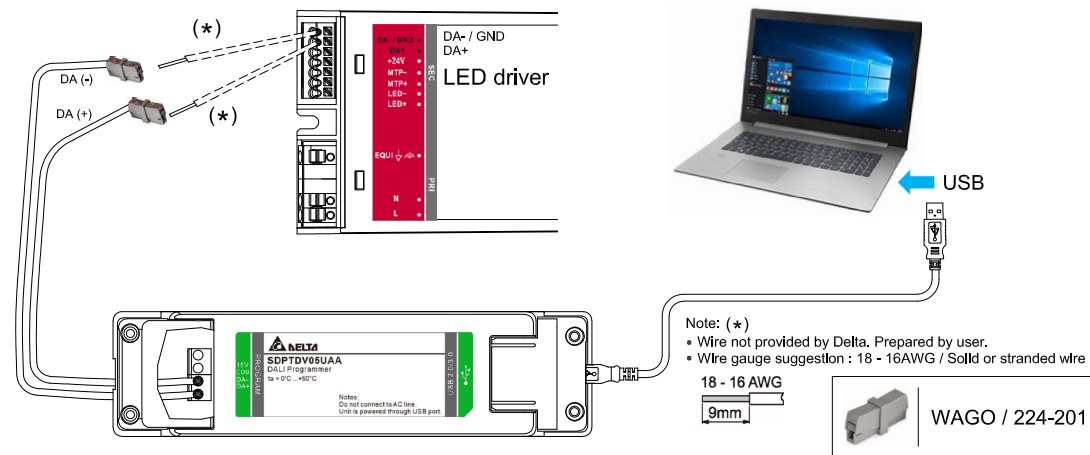


Programming Tools

SDPTDV05UAx

SDPTDV05UAx is a multi-interface kit consist of DALI and DMX/RDM. This kit can be used as a controller for setting and querying standard DALI and DMX/RDM commands through GUI software. It can also be used as a programming tool similar to PTDV05UB. Simply connect to LED driver via DALI or DMX/RDM for reading and writing various setting parameters.

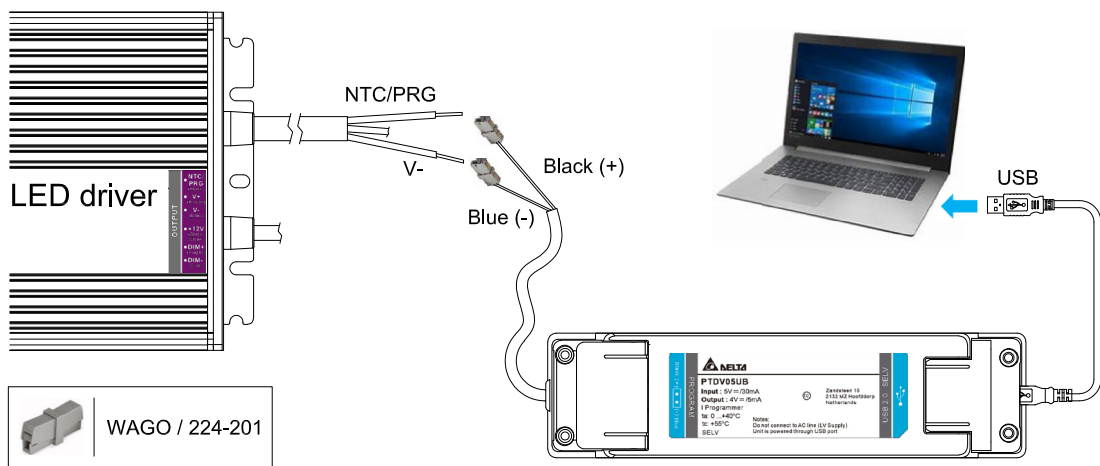
- Build-in DALI bus power supply for up to 50mA (around 25 DALI control gears)
- The DALI interface is polarity sensitive, and the LED driver must be powered from the external AC power supply
- DMX/RDM
- upport driver Firmware Update function



PTDV05UB

PTDV05UB is a custom designed two wired programming tool used for reading and writing various setting parameters, this is one of GUI software supported interfaces called "iProgramming".

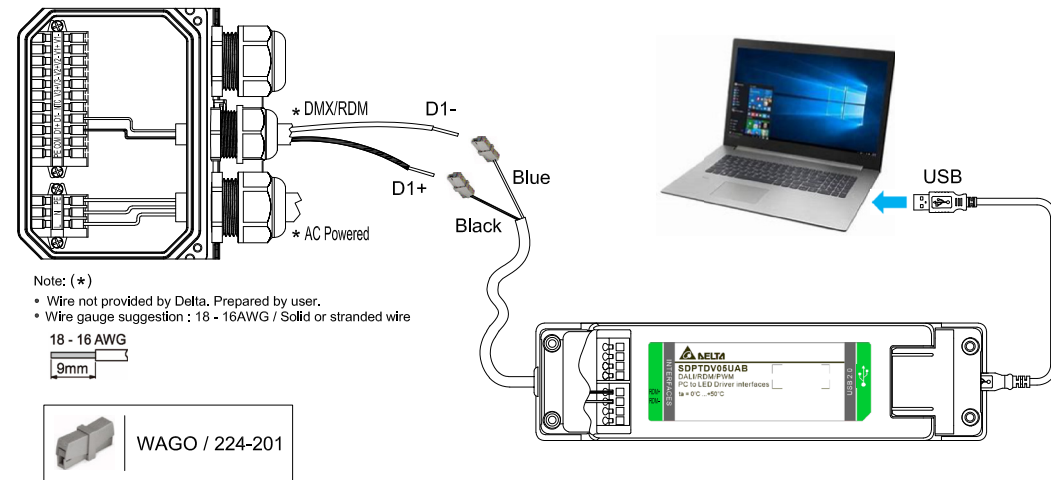
- Simple two wired touch and program
- No AC mains power on is needed for LED driver



Integrated Lighting Studio

The Integrated Lighting Studio (ILS) consist of four major functions: DALI Control, Programming, Power Meter and Firmware Update. All functions are integrated in one single GUI to ease the design efforts for evaluating Delta's LED driver. The executable GUI and user manual can be downloaded from www.deltaww.com/ILS

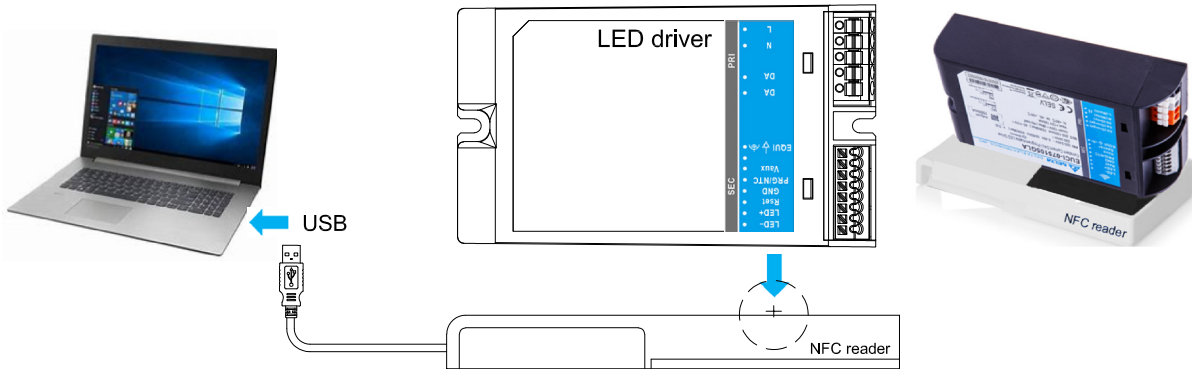
- DALI Control supports all DALI-2 command for Device Type of DT6 and DT8
- Programming supports output current setting and varied protection functions
- Power Meter is based on IEC 62386 part 252
- Firmware Update for DALI-2 models (support only EUCI LITE and EUCI PRE)



CPR30-USB & ISC.PRH101-USB

CPR30-USB and ISC.PRH101-USB are NFC reader/writer manufactured by FEIG Electronics. Both supported by GUI software for reading and writing various setting parameters.

- No wiring to LED driver is needed
- No AC mains power on is needed for LED driver





www.DeltaPSU.com | info@deltapsu.com

Jan 2022 - All information and specifications are subjected to change without prior notice.

© 2022 Delta Electronics, Inc. All Right Reserved.