

접수 번호 : 20-059443-01-1  
(Receipt No.)



# 안전인증서

## Safety Certificate

안전인증번호 : SU10473-20014  
(Certificate No.)

제조업자/수입업자명 : Delta Electronics (Jiangsu) Ltd.  
(Manufacturer/importer)

주소 : 215200, No.1688, Jiangxing East Road, Wujiang Economic and Technological Development Zone, Suzhou City, Jiangsu Province, P. R. China

제품명 : 직류전원장치(AC/DC ADAPTER)  
(Product)

기본모델명 : ADT-150A19AA  
(Basic Model)

파생모델명 : See the attachment 2  
(Series Model)

정격/안전기준상의 모델구분 : AC 100-240 V, 2.5 A, 50-60 Hz, Class I  
(Rating) (DC Output: +19.5 V, 7.7 A)

시험기준 : K60950-1(2011-12)  
(Standard)

본 인증서는 제조국명 : 중국  
제조업자명 : Delta Electronics (Jiangsu) Ltd.  
제조공장의 주소 : 215200, No.1688, Jiangxing East Road, Wujiang Economic and Technological Development Zone, Suzhou City, Jiangsu Province, P. R. China  
의 제품에만 해당함

「전기용품 및 생활용품 안전관리법 시행규칙」 제9조제2항, 제4항, 제10조제2항 또는 제15조제2항에 따라 안전인증서를 발급합니다.

We issue This Safety Certificate for the above appliances in accordance with the Article 9(2),9(4),10(2) or 15(2) of the Enforcement Rule of the Electrical Appliances and Consumer Products Safety Control Act.

2020 년 09 월 21 일  
Year month day

한국산업기술시험원  
KOREA TESTING LABORATORY



\* 이 인증서는 「전기용품 및 생활용품 안전관리법 시행규칙」에 따른 제품의 안전성 확인에 한정된 것이며, 그 밖의 다른 법률이 적용되는 제품의 경우에는 해당 법률에 따라 추가로 인증·허가 등을 받아야 합니다.

첨부서류	1. 전기용품의 안전관리부품 및 재질목록(List of Critical Components) 2. 기본모델·파생모델의 내용 (Descriptions of the basic and series model) 3. 안전인증의 변경 현황 (Revisions Status)
------	---

□ 첨부 1 : 전기용품의 안전관리부품 및 재질목록  
List of Critical Components

부품명(회로기호) Component(Part no.)	제조사(상표명) Manufacturer(Brand)	모델명(형식) Model(Type)	정격 또는 특성 Rating or Characteristics	인증마크 Tested by
Plastic Enclosure	TRINSEO (HONG KONG) LTD	CELEX 3600	V-0, 125 °C, min. 1.9 mm thickness, Two parts secured together by ultrasonic weld.	UL
(Alternate)	LOTTE ADVANCED MATERIALS CO LTD	INFINO HN-1064I	V-0, 130 °C, 1.9 mm thick min. Two parts secured together by ultrasonic weld.	UL
(Alternate)	CHI MEI CORPORATION	PC-6600(Y)	V-0, 130 °C (RTI-Mech-Imp), 1.9 mm min. thickness. Two parts secured together by ultrasonic welding.	UL
Appliance Inlet (SOCKET)	DELTA ELECTRONICS, INC.	SK-1024M	AC 250V, 2.5A, 70 °C	TUV
Fuse (F1)	EVER ISLAND ELECTRIC CO LTD & WALTER ELECTRIC	2010 Serie(s)	T3.15AL, AC 250V	VDE
(Alternate)	CONQUER ELECTRONICS CO LTD	MST series	T3.15AL, AC 250V	VDE
(Alternate)	DONGGUAN BETTER ELECTRONICS TECHNOLOGY CO LTD	932	T3.15AL, AC 250V	VDE
X-Capacitor (CX1)	KEMET ELECTRONICS CORPORATION	R.46	0.47uF max., 275Vac, 125 °C X2 type	ENEC 03
(Alternate)	Europtronic (SuZhou) Co. Ltd.	MPX	0.47uF max., 275Vac or 305Vac, 105 °C, X2 type	VDE
(Alternate)	Europtronic (SuZhou) Co. Ltd.	MPX2	0.47uF max., 275Vac or 305Vac 110 °C, X2 type	VDE
(Alternate)	STRONG COMPONENTS CO LTD	MPX	0.47uF max., 250/275/310Vac, 110 °C, X2 type	VDE



부품명(회로기호) Component(Part no.)	제조사(상표명) Manufacturer(Brand)	모델명(형식) Model(Type)	정격 또는 특성 Rating or Characteristics	인증마크 Tested by
(Alternate)	ZhuHai Sung Ho Electronics Co. Ltd.	CMPP	0.47uF max., 275 or 310Vac, 105 °C, X2 type	VDE
(Alternate)	TDK Electronics Components S.A.U., TDK (Zhuhai FTZ) Co., Ltd.	B3292, B3292#	0.47uF max., 250Vac min., 105 °C min., X2 type	VDE, ENEC
Bleeder Resistors (R1, R2)	TA-I TECHNOLOGY CO., LTD.	RH12	1M $\Omega$ max., 1/4W	Semko
(Alternate)	Taiwan Kamaya Electric co., Ltd	RVC32	1M $\Omega$ max., 1/4W	Intertek
(Alternate)	PROSPERITY DIELECTRICS CO LTD	FVS06 series	1M $\Omega$ max., 1/4W	UL
(Alternate)	Yageo Corporation	RV1206	1M $\Omega$ max., 1/4W	UL
Line Filter (FL1)	DELTA ELECTRONICS, INC.	HFH-MP17166	Min. 130 °C	-
Isolating Transformer (T1)	Delta Electronics (Jiangsu) Co., Ltd.: Delta Electronics (Thailand) Public Co., Ltd.: Delta Electronics (Wuhu) Co., Ltd.: Delta Electronics (Chen Zhou) Co., Ltd.	MV-MP17217	Class B	-
Optocoupler (IC51, IC52)	Everlight Electronics Co., Ltd	EL101X(X=0:1; 2:3:4:5:6:7:8:9) V, EL101X.(X=0:1; 2:3:4:5:6:7:8:9)	Reinforced Insulation	VDE, D, N
(Alternate)	LITE-ON TECHNOLOGY CORP	LTV-10XX(X=0-9)	Reinforced Insulation	VDE, F
(Alternate)	TOSHIBA ELECTRONIC DEVICES & STORAGE CORPORATION	TLP385	Reinforced Insulation	VDE

부품명(회로기호) Component(Part no.)	제조사(상표명) Manufacturer(Brand)	모델명(형식) Model(Type)	정격 또는 특성 Rating or Characteristics	인증마크 Tested by
Y-Capacitors (CY1)	Murata Mfg. Co., Ltd.	KX	680pF max., 250Vac min., Y1 type, 125 °C min.,	VDE
(Alternate)	WALSIN TECHNOLOGY CORP	AH	680pF max., 250Vac min., Y1 type, 125 °C min.,	VDE
(Alternate)	TDK CORPORATION	CD	680pF max., 250Vac min., Y1 type, 125 °C min.,	VDE, S, N, FI,
(Alternate)	Kunshan Wansheng Electronics Co., Ltd.	CT7, CT7-Series	680pF max., 250Vac min., Y1 type, 125 °C min.,	VDE, FI, N, D, S
(Alternate)	MURATA MFG CO LTD	RA-Series	680pF max., 250Vac min., Y1 type, 125 °C min.,	VDE, ENEC
PWB	Interchangeable	Interchangeable	V-0, 130 °C	UL

유의사항 (Attention) :

1. 안전관리부품은 전기적인 안전에 직접적인 영향을 주는 부품으로서 안전인증기관이 정기공장검사 시 확인 관리 하는 사항입니다. 따라서 상기목록에 기재된 사항을 변경하거나 또는 복수등재를 원하시는 경우는 안전인증기관에 인증변경신청을 하여야 합니다.

*As the "Critical components" are parts in directly related with safety, these components shall be checked during a factory inspection by the certification body. In case of applying multiple listing or changing the items above, the certification revision shall be applied.*

2. 인증변경신청 없이 임의로 변경하는 경우는, 전기용품 및 생활용품 안전관리법 시행규칙 제 21 조제 1 항 또는 제 38 조제 1 항 규정에 의한 안전인증 취소 혹은 안전확인신고 효력상실 사유가 됨을 유의하시기 바랍니다.

*The Safety Certification will be cancelled under the Article 21(1), 38(1) of the Enforcement Rule of the Electrical appliances and Consumer Products Safety Control Act if the contents of the Certification is altered without our authorization.*

□ 첨부 2 : 기본모델 · 파생모델의 내용  
Description of the basic and series model

파생모델명 Derivative model	기본모델과의 차이점 Differences between the basic and derivative model(s)
ADT-150A19AA G-A	It is identical with basic model except for model designation.
ADT-150A19AA 4-A	It is identical with basic model except for model designation.
ADT-150A19AA 5-A	It is identical with basic model except for model designation.
ADT-150A19AA 6-A	It is identical with basic model except for model designation.
ADT-150A19AA 7-A	It is identical with basic model except for model designation.
ADT-150T19AA	It is identical with basic model except for model designation.
ADT-150T19AA G-A	It is identical with basic model except for model designation.
ADT-150T19AA 4-A	It is identical with basic model except for model designation.
ADT-150T19AA 5-A	It is identical with basic model except for model designation.
ADT-150T19AA 6-A	It is identical with basic model except for model designation.
ADT-150T19AA 7-A	It is identical with basic model except for model designation.
제품특기사항 및 시험조건 Remarks & Test conditions	
<p>1. Review Ref. No.: 20-059443-01-2</p> <p>2. Product Description:</p> <ul style="list-style-type: none"> <li>- Measured Power Consumption: 162.2 W</li> <li>- Insulation Class: Class I</li> <li>- Protection against Ingress of water: IPX0</li> <li>- Mass of Equipment: 0.415 kg</li> </ul>	
<p>□ 본 제품의 검토내용에 관하여 의문사항이 있으시면 아래 연락처로 문의하시기 바랍니다. 검토 담당자 : BK 전략본부 인증관리센터 김 영환 / 02-8601-478</p> <p>□ If you have any question on product review, please contact the person below : Job holder: BK Strategy Division, Certification Management Center, Young-Hwan Kim / +82 2 860-1478</p>	

FP511-05

**첨부 3 : 안전인증의 변경 현황**  
Revisions Status

변경발급 내용 Contents of Certificate Revisions
Not applicable

FP511-06

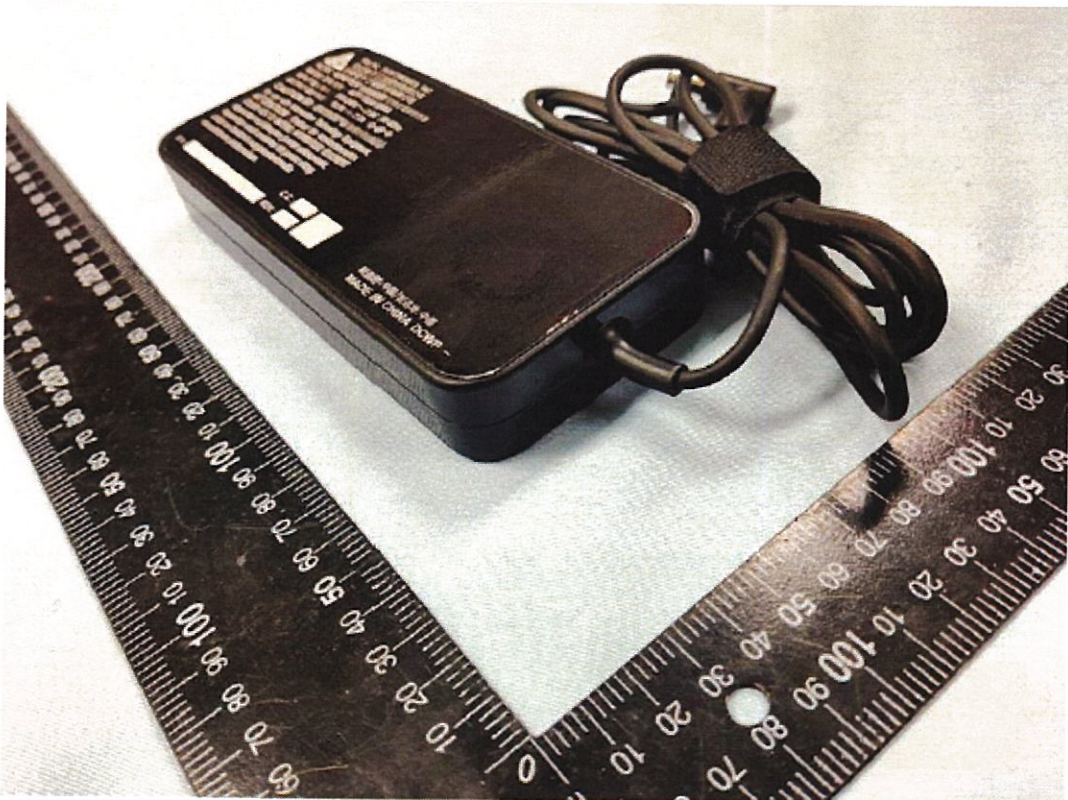


첨부 : 제품사진  
Photographs

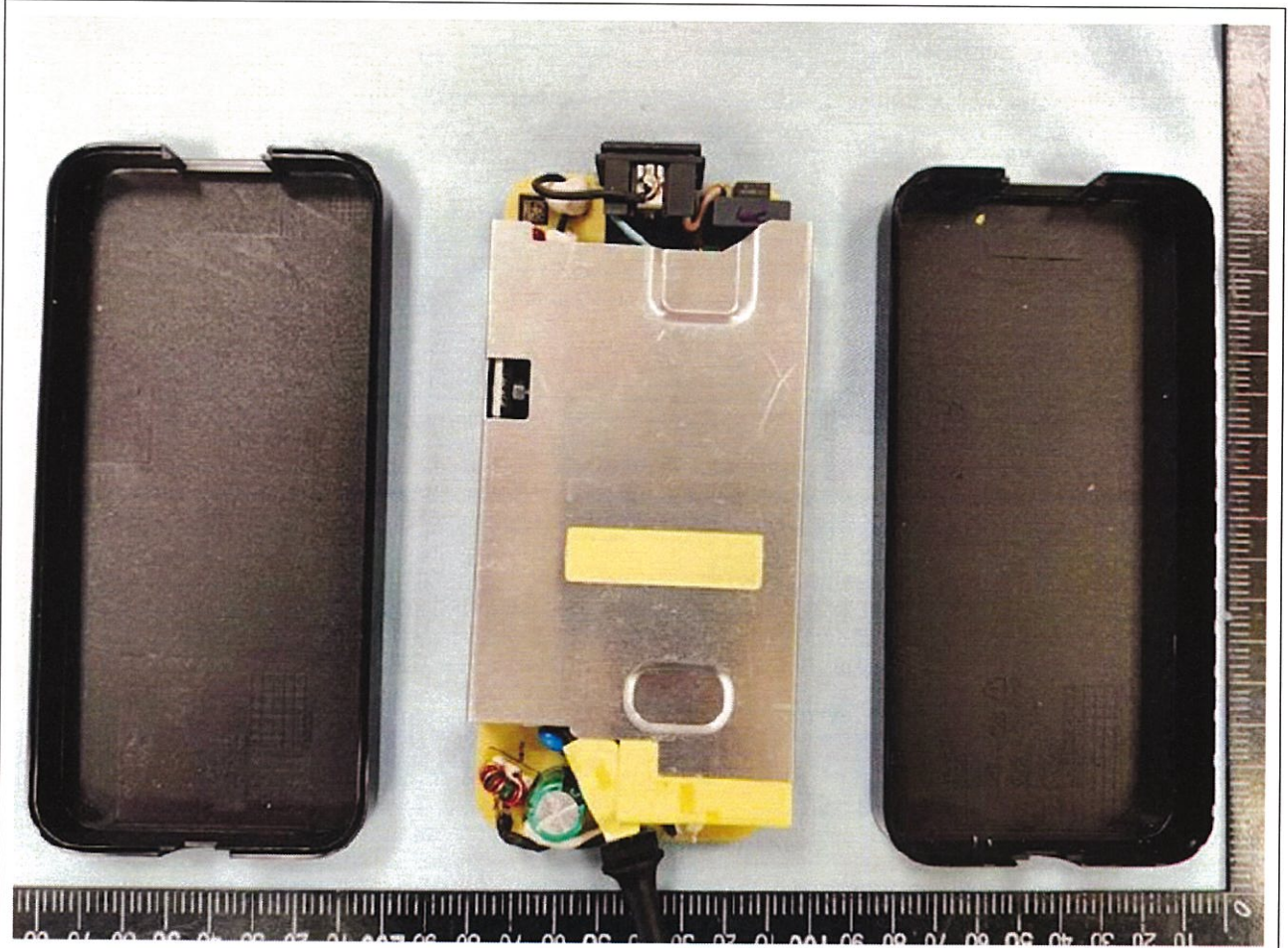
Front View



Back View







Internal View

